

[Miljøministeren]

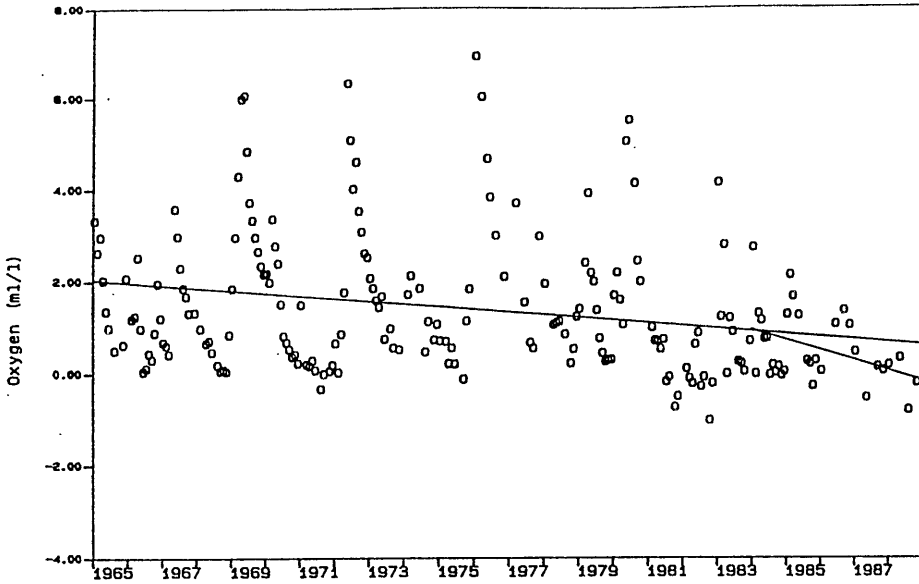


Figure 9. Long-term trends of monthly means of oxygen values (ml/l) in the bottom water (80 m to bottom) of the Bornholm Basin from 1965 to 1988. Mean values of the stations BY 4 and BY 5 (BMP K2) have been used.

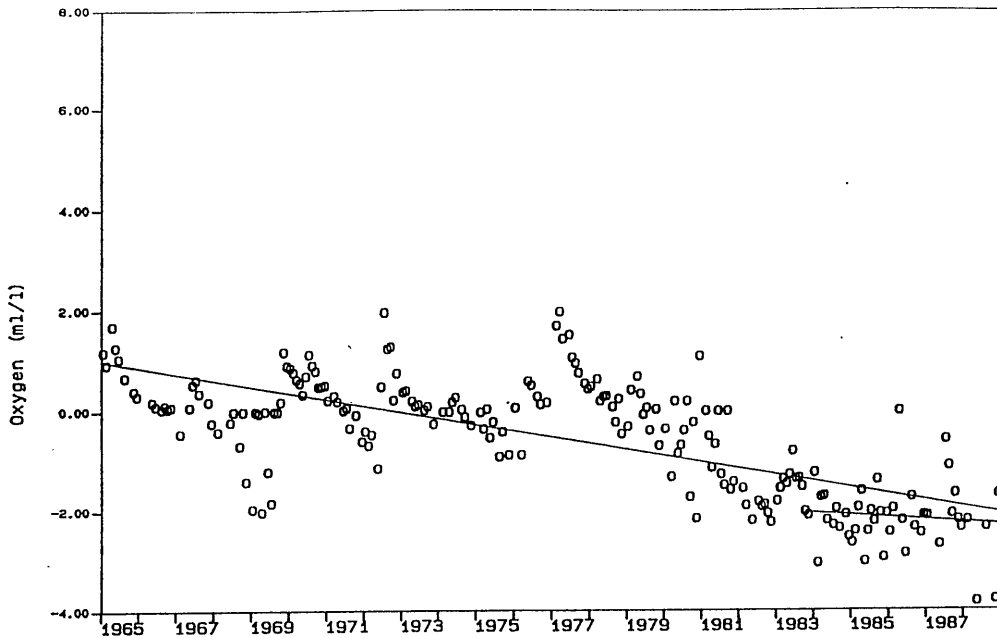
90 m

Figure 11. Long-term trends of monthly means of oxygen and negative oxygen values (ml/l) in the bottom water (200 m to bottom) of the Gotland Deep, BY 15 (BMP J1), from 1965 to 1988.

000007

240 m